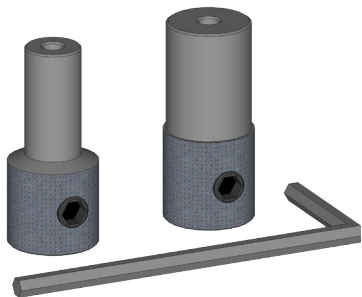


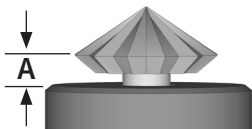
Setter's Helper

410-750



INSTRUCTIONS

1. Choose the appropriate size bur holder. The larger holder is for large stones and settings, while the smaller holder is for small prongs and cluster settings.
2. Insert a Hart bur, the same size as your stone, into the bur holder. *If you'll be cutting one prong at a time, use a slightly smaller bur.*
3. Set the height of the bur to match the depth of your setting. The distance from the end of the bur holder to the end of the bur should be the same as the depth of the stone's girdle in the setting (A).



Contenti

4. Tighten the small screw using the included hex wrench.
5. Make sure that all prongs (or setting edges) are the even.
6. Insert the shank of the bur into your flex-shaft handpiece and secure it.
7. Secure your setting in a ring clamp, shellac stick, or other fixture.
8. Working slowly, with your flex-shaft at a moderate speed, bring the bur down into the center of your setting until the ends of the prongs touch the end of the bur holder.

