



HANDPIECE MAINTENANCE

IMPACT HANDPIECE

The impact handpiece must be kept clean for proper operation. If operation becomes sluggish, erratic, or fails to operate, cleaning is indicated.

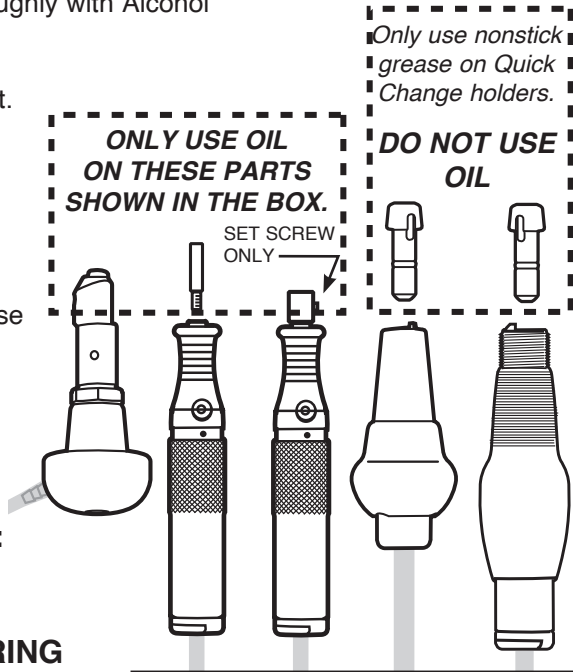
TO CLEAN HANDPIECE:

1. Remove hose connector, piston and spring.
2. Clean all parts thoroughly with Alcohol based solvents ONLY.
3. Reassemble and test.

Occasionally place a drop of oil on the handpiece chuck threads and jaws. Only use non-stick grease on Quick Change holders. This will extend useful life, and improve operation.



**IMPORTANT:
DO NOT
LUBRICATE
PISTON, SPRING
OR BORE.**



ROTARY HANDPIECE

Refer to the operating instructions for operation and routine maintenance of the rotary handpiece.

GLENDO LLC

900 Overlander Road • Emporia, KS 66801 USA
800-835-3519 • 620-343-1084
Fax: 620-343-9640
glendo@glendo.com • www.grstools.com
Last Updated: 2020-03-25 LIT-145

