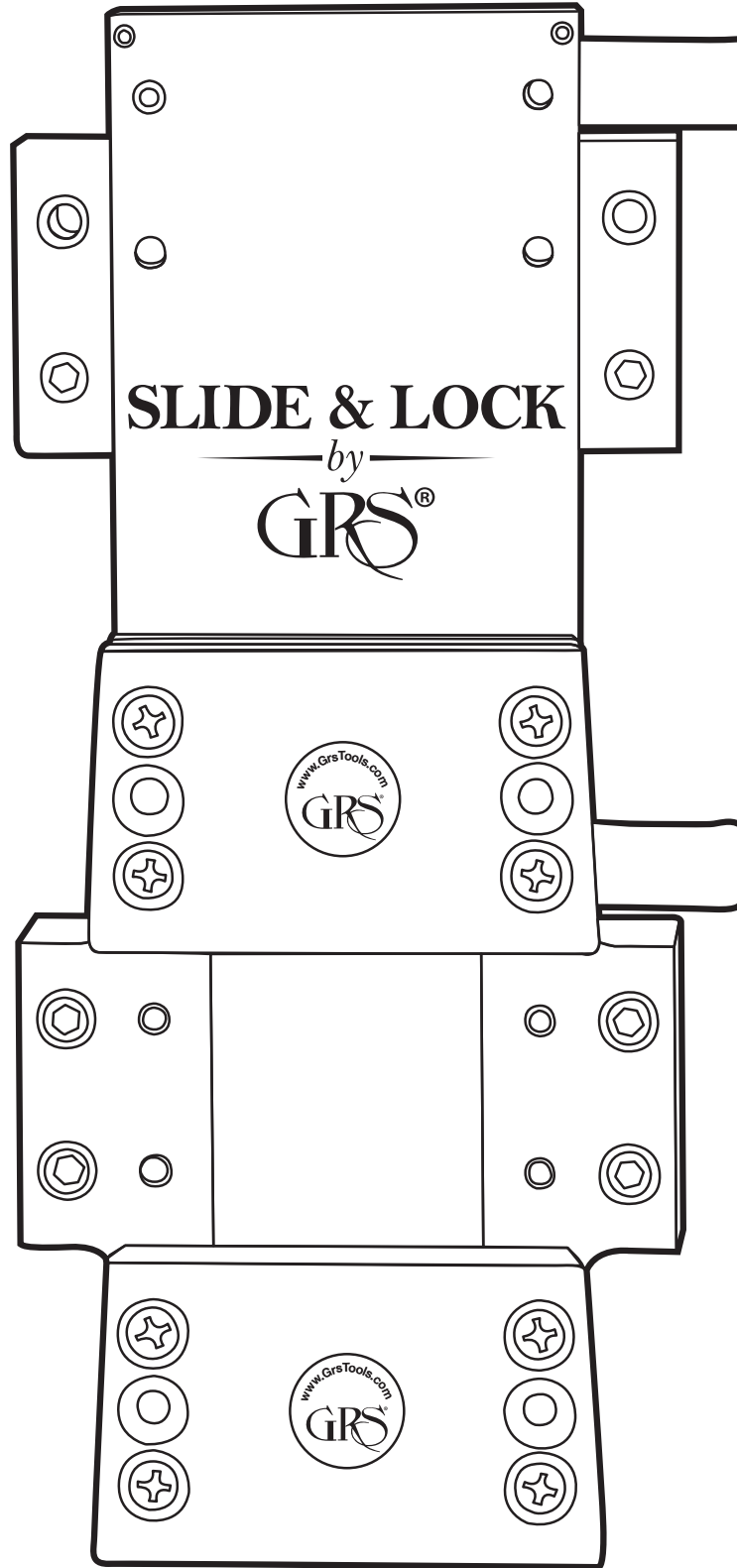


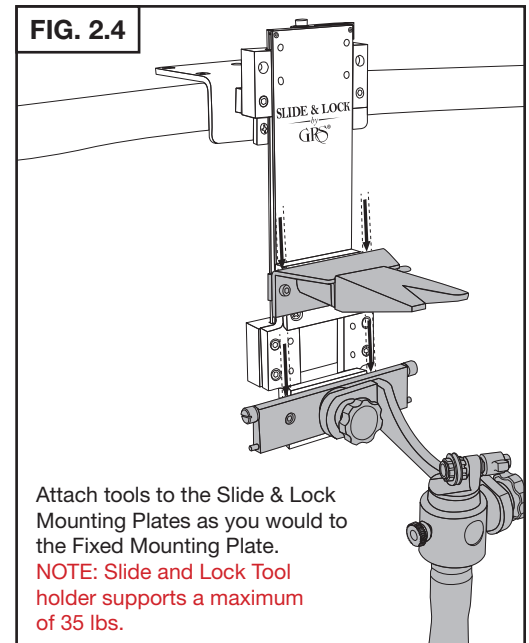
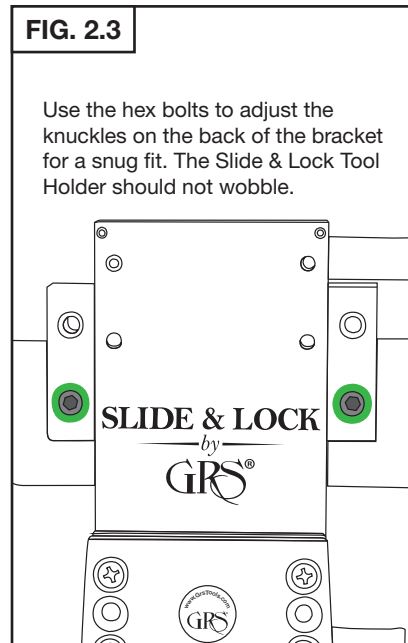
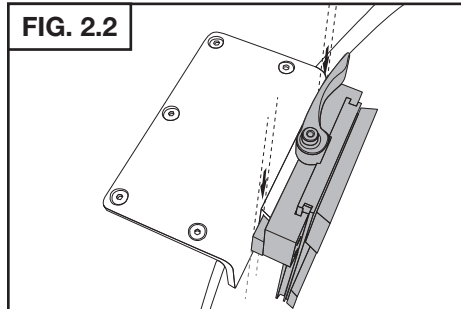
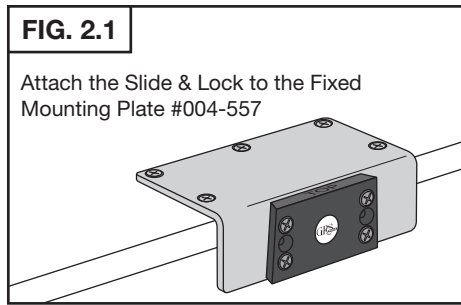


Slide & Lock Tru-Axis

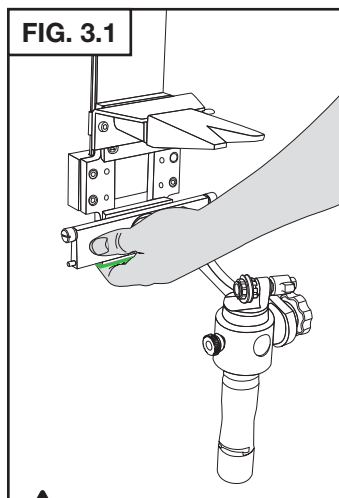
INSTRUCTIONS • #004-759



2. BENCH ATTACHMENT & TOOL ATTACHMENT

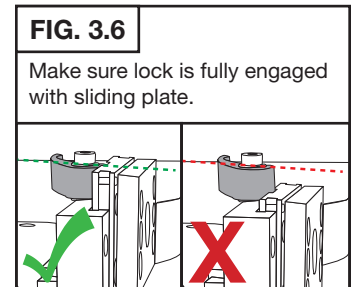
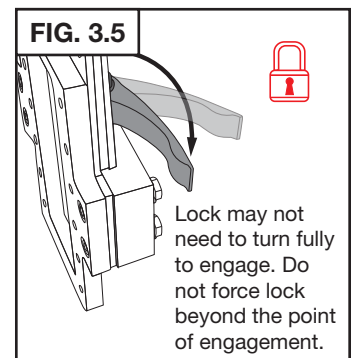
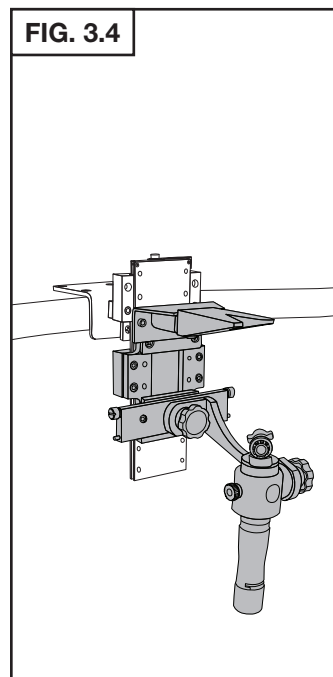
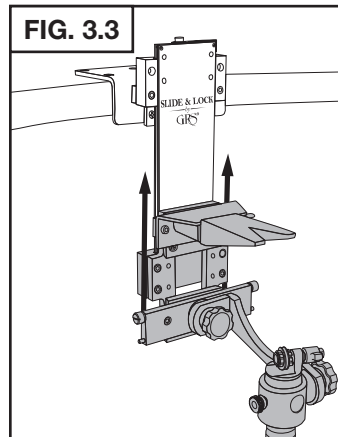
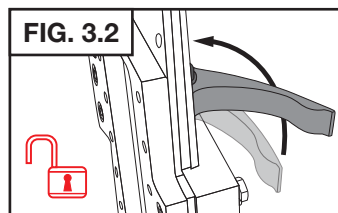


3. HEIGHT ADJUSTMENT

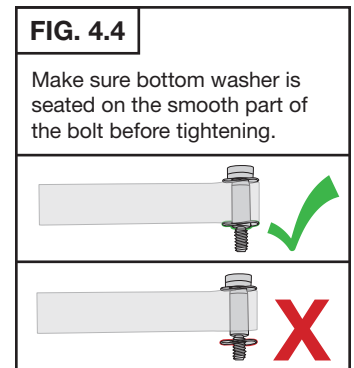
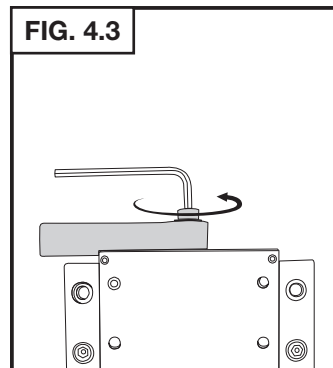
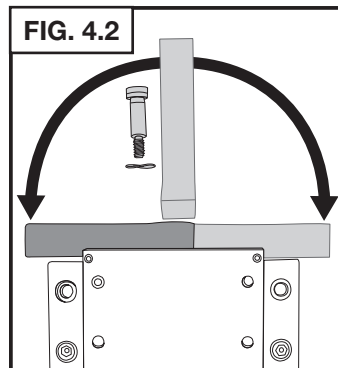
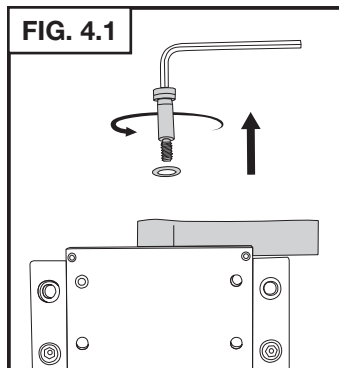


CAUTION

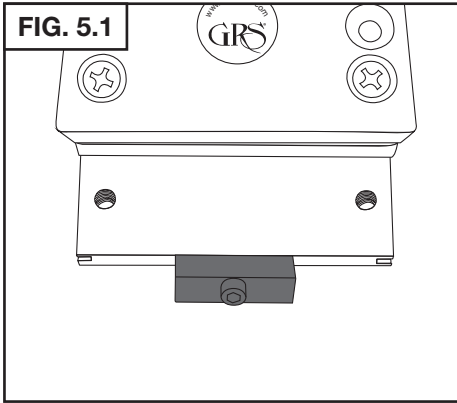
Place one hand to support the bottom of the Slide & Lock Tool and the weight of all attached tools before unlocking for height adjustment.



4. SWITCHING THE LOCK FOR LEFT-HANDED USE (OPTIONAL)



5. IMPORTANT SAFETY FEATURE THE SLIDE STOP



CAUTION

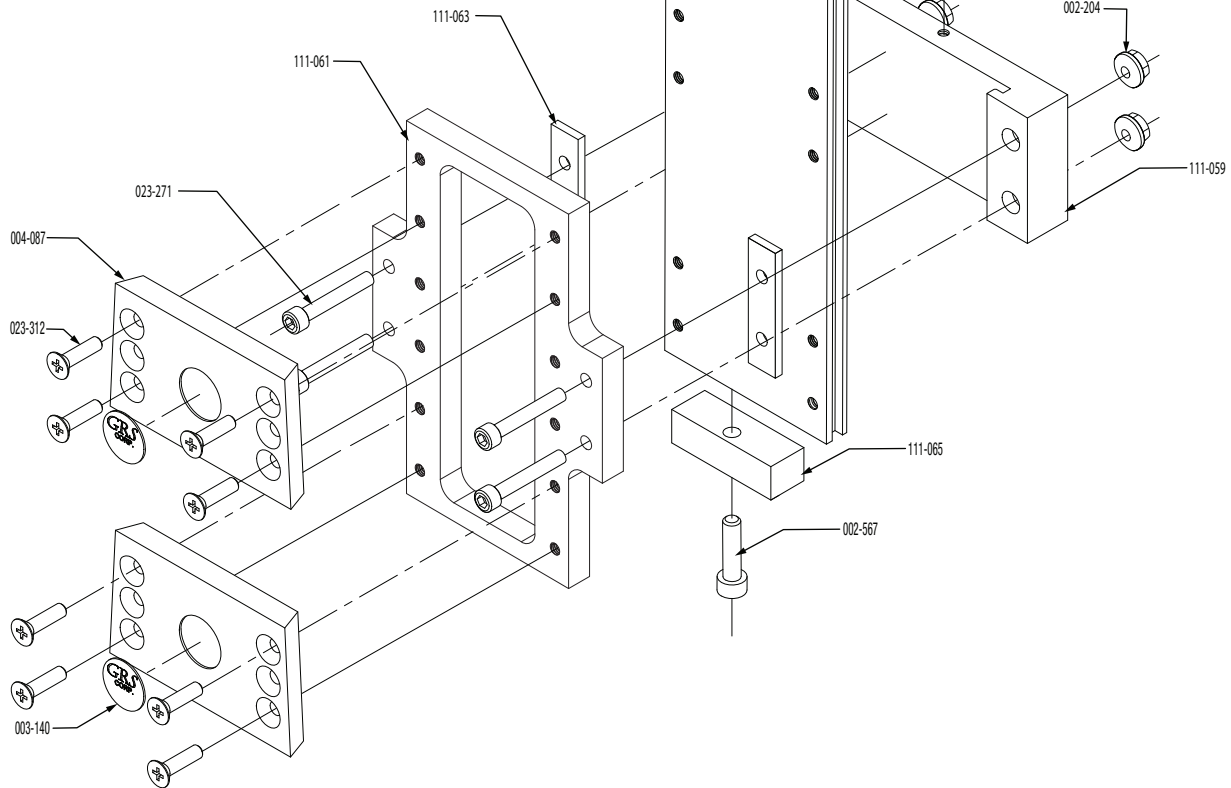
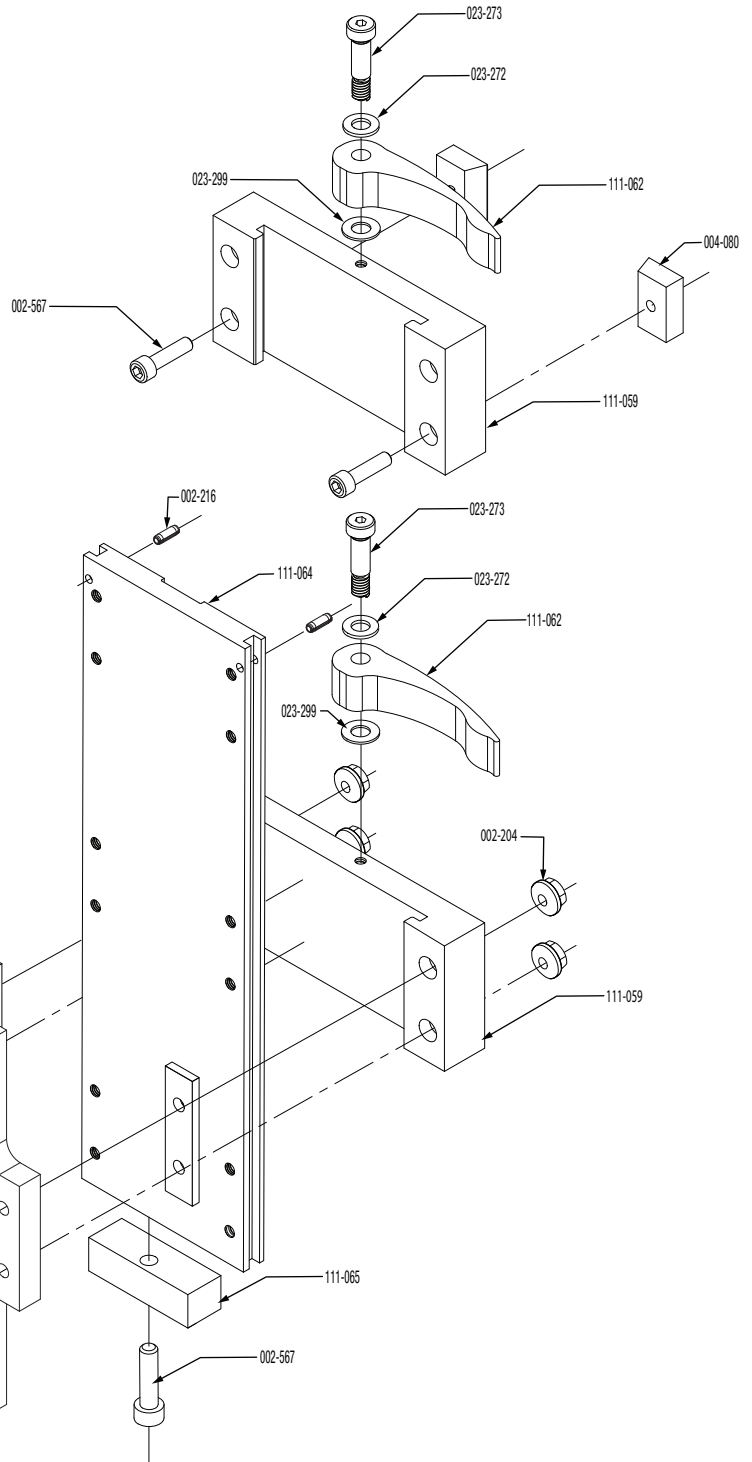
The stop is necessary to keep the Tru-Axis Slide from sliding off the bottom of the tool holder when unlocked. Check the bolt periodically to make sure the stop is securely fastened.

GRS[®] Slide & Lock Tru-Axis

PARTS LIST • #004-759

PART #	DESCRIPTION	QTY.
002-204	10-32 ZIP NUT, Zinc	4
002-216	.125 x .375 LONG PIN	2
002-429	5/32" ALLEN WRENCH*	2
002-567	10-32 x .75" SHCS BLK	3
003-140	GRS NAMEPLATE, .75 DIAMETER	2
004-080	BEVEL NUT	2
004-087	MOUNTING PLATE	2
022-053	1/8" ALLEN WRENCH*	2
023-271	10-32 x 1.25" SHCS BO	4
023-272	M6 WAVE WASHER	2
023-273	1/4 x 5/8 STRIP SHOULDER CAP	2
023-299	WASHER, NYLON, .257 x .50 x .032	2
023-312	10-32 x .62" FHS ZINC	8
111-059	SLIDE BLOCK	2
111-061	ADAPTER BLOCK	1
111-062	CAM LEVER	2
111-063	SPACER	2
111-064	SLIDE	1
111-065	STOP BLOCK	1

*NOT SHOWN



GLENDO LLC

900 Overlander Road • Emporia, KS 66801 USA
 800-835-3519 • 620-343-1084 • Fax: 620-343-9640
 hello@grs.com • www.grs.com
 Last Update: 2019-02-21